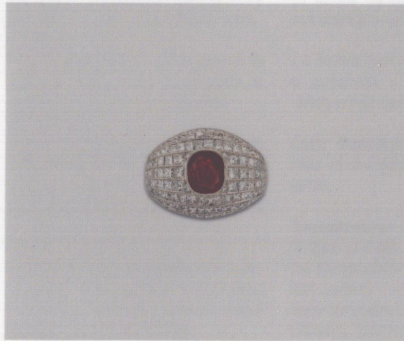


# The Prestige Gemstone Report™

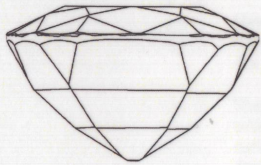
American Gemological Laboratories



Imaging

Images do not accurately portray size or color.

Accu-Vu™ Imaging:



Comments:  
This diagram is an example and does not represent the actual facet arrangement of the item described

General Report Comments:

American Gemological Laboratories  
580 Fifth Avenue • New York, NY 10036 • 212.704.0727 • www.aglgemlab.com  
(Please see the back of this document for important disclaimer information) © 2024 AGL

Document No: 1143137      Validation Date: 27 September 2024

**Identification**

Mineral Type: Natural Corundum      Transparency: Transparent  
Variety: Ruby      Color Description: Red

Carat Weight: Stated by Client 2.56 cts      Shape: Cushion  
Measurements: Approx. 7.0 x 6.0 x 5.2 mm      Cutting Style: Mixed Cut

Comments: Set in a white metal ring with numerous square diamonds (identified at random).

Identification

**Origin**

Provenance: Burma (Myanmar)

Comments: Based on available gemological information, it is the opinion of the Laboratory that the origin of this material would be classified as Burma (Myanmar).



Origin

**Enhancement**

Standard: Heat enhancement: None      Additional: None

Comments: Non-heated rubies are scarce. Rubies are commonly heated to modify their color and appearance.

Enhancement

1	2	3	4	5	6	7	8	9	10	None	Insignificant	Minor	Moderate	Strong	Prominent
Excellent	Very Good	Good	Fair	Poor	Extremely Rare	Very Rare	Rare	Uncommon	Common	Very Common					

Enhancement Stability Index™

Degree of Clarity Enhancement & Relative Rarity™

*M. Chaipaksa*  
Monruedee Chaipaksa, Senior Gemologist

*Christopher P. Smith*  
Christopher P. Smith, President



**American Gemological Laboratories™**  
America's first and most highly respected origin lab.

About Us

Founded in 1977,  
AGL is an internationally recognized gemstone testing facility, specializing in comprehensive colored stone analyses.

AGL has the distinction of being the first laboratory in the United States to issue Country-of-Origin reports. Our company and its principals have a long tradition of research into the detection of and reporting on gem identification-and-classification, gemstone treatments and provenance determinations.

Our staff is composed of experts in the field of gemstone testing and reporting. Our findings reflect the latest knowledge and analytical techniques to ensure the highest standards are applied on every stone we test.

AGL's testing and reporting methodology provide you with unsurpassed quality and reliability. We are committed to providing the highest level of service and reporting that our clients and the industry have come to expect from the AGL.