

LABORATORY FINDINGS

Description 1 Loose Stone

Weight 2.19 ct

Dimensions 8.19 x 5.91 x 4.88 mm

Shape Antique Cushion

Cutting Style Faceted

Crown Brilliant

Pavilion Step

Transparency Transparent

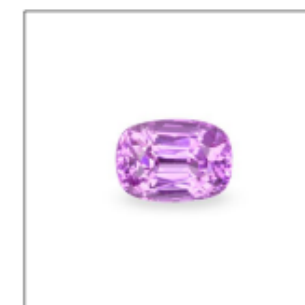
Color (Daylight) Pink

Saturation Medium

Tone Medium-Light

Enhancements No indications of heating/treatment

ID →

NATURAL
SAPPHIRE

NOTES

Due to this gem's high degree of clarity, origin determination is not possible.

Lotus Gemology is one of the world's most respected colored gemstone laboratories. This report is a professional opinion based on the results of scientific tests, coupled with the extensive experience of Lotus gemologists. The following pages contain information crucial to understanding the results.

Verify this report by referencing Report No. 3774-9467 with PIN No. 80432 at LotusGemology.com.

Lotus Gemology

Silom 19 Building, Suite 411 • 45/1 Soi 19, Silom Rd.

Bangkok 10500 • Thailand

Tel: +66 2 117 3616

info@lotusgemology.com • www.lotusgemology.com