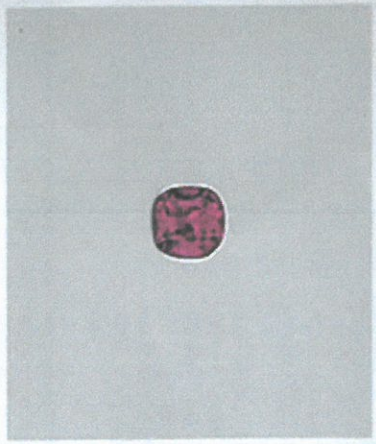


30-8704

RG40423 Desc Carat 1.35 Cut Color Clarity Origin Type AGL

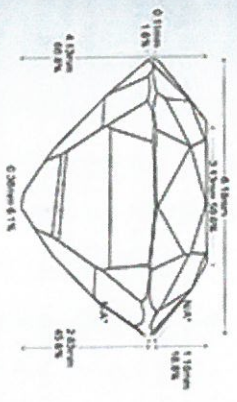
INTERNET RUBIUS GEMMISUUM REPORT



bulgem

Images do not accurately portray size or color.

Aqua-Vu™ Imaging:




Comments:

General Report Comments:

American Gemological Laboratories
 580 Fifth Avenue • New York, NY 10036 • 212.704.0727 • Fax: 212.784.7614 • www.agilgemlab.com
 Please see the back of this document for important disclaimer information © 2018 AGL

Identification
 Document No: 1093435 Validation Date: 29 June 2018
 Identification
 Mineral Type: Natural Corundum
 Variety: Ruby
 Color Description: Red
 Carat Weight: 1.35 cts
 Measurements: 6.42 x 6.18 x 4.13 mm
 Shape: Square Cushion
 Cutting Style: Mixed Cut
 Comments:

Origin
 Provenance: Burma (Myanmar)
 Comments: Based on available gemological information, it is the opinion of the Laboratory that the origin of this material would be classified as Burma (Myanmar).


Enhancement
 Standard: No gemological evidence of heat
 Additional: Clarity enhancement: None
 Comments: Non-heated rubies are scarce. Rubies are commonly heated to modify their color and appearance.

Enhancement Stability Index™

| | | | | | | | | | |
|-----------|-----------|------|------|------|---|---|---|---|----|
| 1 | 2 | 3 | 4 | 5 | 6 | 7 | 8 | 9 | 10 |
| Excellent | Very Good | Good | Fair | Poor | | | | | |

Degree of Clarity Enhancement & Relative Rarity™

| | | | | | |
|-------------|--------|----------|-------|------------|-----------------|
| None | Minor | Medium | Major | Very Major | Extremely Major |
| Very Common | Common | Uncommon | Rare | Very Rare | Extremely Rare |

Christopher P. Smith, President

