



GIA
GEMOLOGICAL INSTITUTE OF AMERICA®

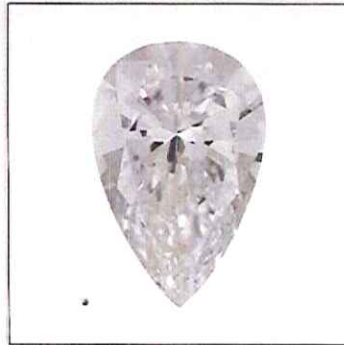
5355 Armada Drive | Carlsbad, CA 92008-4602
T: 760-603-4500 | F: 760-603-1814

GIA Laboratories
Bangkok Carlsbad Gaborone
Johannesburg Mumbai New York
www.gia.edu

September 22, 2011

DIAMOND TYPE CLASSIFICATION FOR GIA DIAMOND GRADING REPORT #2135912026

Scientists classify diamonds into two main "types" - type I and type II - based on the presence or absence of nitrogen which can replace carbon atoms in a diamond's atomic structure. These two diamond types can be distinguished on the basis of differences in their chemical and physical properties. Type II diamonds contain little if any nitrogen and they are subdivided into two groups (IIa and IIb) both of which are quite rare (less than 2% of all gem diamonds).



According to the records of the GIA Laboratory, the 3.02 carat Pear Brilliant diamond described in GIA Diamond Grading Report #2135912026 has been determined to be a **type IIa** diamond. Type IIa diamonds are the most chemically pure type of diamond and often have exceptional optical transparency. Type IIa diamonds were first identified as originating from India (particularly from the Golconda region) but have since been recovered in all major diamond-producing regions of the world.

Among famous gem diamonds, the 530.20 carat Cullinan I and the 105.60 carat Koh-i-noor are examples of type IIa.

PLEASE REFER TO IMPORTANT LIMITATIONS ON THE BACK OF THIS DOCUMENT.



GIA
GEMOLOGICAL INSTITUTE OF AMERICA*

5355 Armada Drive | Carlsbad, CA 92008-4602
T: 760-603-4500 | F: 760-603-1814

GIA Laboratories
Bangkok Carlsbad Gaborone
Johannesburg Mumbai New York

www.gia.edu

DIAMOND GRADING REPORT

November 03, 2011

Shape and Cutting Style **Pear Brilliant**
Measurements 12.94 x 8.31 x 5.01 mm

GIA REPORT 2135912026

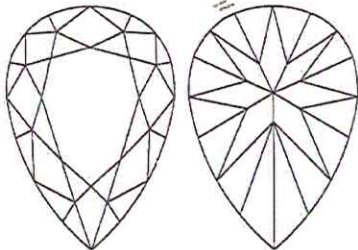
GRADING RESULTS

Carat Weight **3.02 carat**
Color Grade **D**
Clarity Grade **INTERNALLY FLAWLESS**

ADDITIONAL GRADING INFORMATION

Finish
Polish **Good**
Symmetry **Very Good**
Fluorescence **None**
Comments:
Minor details of polish are not shown.

REFERENCE DIAGRAMS

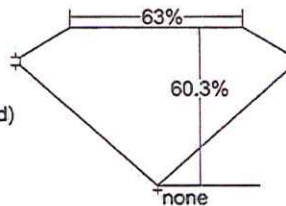


KEY TO SYMBOLS

Red symbols denote internal characteristics (inclusions). Green or black symbols denote external characteristics (blemishes). Diagram is an approximate representation of the diamond, and symbols shown indicate type, position, and approximate size of clarity characteristics. All clarity characteristics may not be shown. Details of finish are not shown.

GIA COLOR SCALE		GIA CLARITY SCALE	
COLORLESS	D	VERY, VERY SLIGHTLY INCLUDED	FLAWLESS
	E		INTERNALLY FLAWLESS
	F		VVS ₁
NEAR COLORLESS	G	SLIGHTLY INCLUDED	VVS ₂
	H		VS ₁
	I		VS ₂
FAINT	J	SLIGHTLY ABOVE INCLUDED	SI ₁
	K		SI ₂
	L		I ₁
VERY LIGHT	M	INCLUDED	I ₂
	N		I ₃
	O		
LIGHT	P		
	Q		
	R		
	S		
	T		
	U		
	V		
W			
X			
Y			
Z			

thin
-
very thick
(faceted)



Profile not to actual proportions



This Report is not a guarantee, valuation or appraisal and contains only the characteristics of the diamond described herein after it has been graded, tested, examined and analyzed by the laboratory providing this Report ("GIA") and/or has been inscribed using the techniques and equipment used by GIA at the time of the examination and/or inscription. Inscriptions reported in this document are not a guarantee, validation, or warranty of a diamond's quality, country of origin or source; or that the diamond will be identifiable by the inscription in the future (since inscriptions can be removed). GIA makes no representation concerning any trademark, word or symbol which is inscribed by GIA or which is identified on this Report. The recipient of this Report may wish to consult a credentialed jeweler or gemologist about the information contained herein.



The security features in this document, including the hologram, security screen and microprint lines, in addition to those not listed, exceed document security industry practices.

IMPORTANT LIMITATIONS ON BACK
©2008 GEMOLOGICAL INSTITUTE OF AMERICA, INC.