



## GEMMOLOGICAL REPORT

Report Number  
22043001

Colour  
red

Date  
23 April 2022

Species  
Natural corundum

Item  
One faceted gemstone set in a ring

Variety  
Ruby

Weight  
12.88 ct (as indicated by the client)

Origin  
Burma (Myanmar)

Shape  
octagonal

Condition  
No indications of heating (NTE).  
Indications of minor clarity  
enhancement (F1).

Cut  
modified step cut

Comments  
See Information Sheet(s).

Measurements  
approx. 14.70 x 13.15 x 6.15 mm

Important notes and limitations on the reverse.

Transparency  
transparent to translucent

Annette Widemann-Wong

Alessandra Spingardi



## INFORMATION SHEET

to Report No. 22043001

### Rubies from Mogok, Burma

Burma has long been recognised as the locality associated with the most desirable rubies in the world. Within Burma (Myanmar), the most famed region is the Mogok Valley, or Mogok Stone Tract, in the Pyin Oo Lwin district, North East of Mandalay: a small area of a few dozen square miles, of which only a portion is gem-bearing. Meanwhile, there are few more small deposits to the north of Mogok, such as Namyá, that produce rubies with similar characteristics.

Although it is uncertain when mining first began, accounts indicate that rubies have been sourced in the Mogok area for well over a thousand years.

The earliest surviving records of mining activity began in 1597, when the King of Burma took over the mines. Burmese rubies, especially the ones from Mogok, have since sustained the strongest renown.

Mogok-type rubies typically possess a red body colour and red UV-fluorescence. In addition, they may contain tiny amounts of light-scattering rutile silk and a swirl-like growth pattern. It is this combination of features which gives these rubies their characteristic appearance.

Information Sheets are intended to provide information supplementary to the contents of the Report and comment on, for instance, the type of gemstone, the geographic origin and the presence or absence of treatments. By definition, Information Sheets are purely informative in nature: they consist of a standard text and are issued for all types of stones of that particular category. Information Sheets, therefore, do not imply a certain quality or rarity of the stone described in the Gübelin Gem Lab Report which it is attached to.

# RAPPORT DE PIERRE PRÉCIEUSE · EDELSTEINBERICHT GEMSTONE REPORT

**No.** CDC 2203890  
**Date** 26 March 2022

## Object description

An elegant "PT950, 750" stamped platinum & yellow gold ring consisting of a ruby delicately accented by two side colourless diamonds.

**Weight \*** **Ruby: 12.88 ct**  
**Dimensions** Approx. 14.80 x 13.05 x 6.15 mm

**Colour** Intense red  
**Shape/style** Octagonal/mixed cut  
**Transparency** Transparent

## Identification

This gemstone shows gemological properties consistent with those of rubies from:

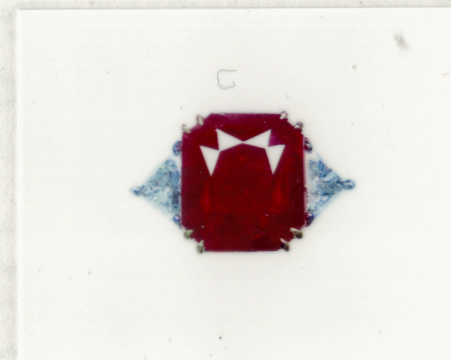
**RUBY (Natural Corundum)**

**Burma (Myanmar) \*\***

**Comments** No indications of heating.

\* As indicated by the client.

\*\* Historic mines of the "Mogok stone tract".



**C. Dunaigre Consulting GmbH**  
Christian Dunaigre AG, DUG

IDENTIFICATION · IDENTIFIKATION · IDENTIFICATION

**This Gemstone Identification Report is a professional and independent opinion based on the gemmological properties of the gemstone at the time of the examination. The reverse side is an integral part of the Report and contains important information and limitations.**