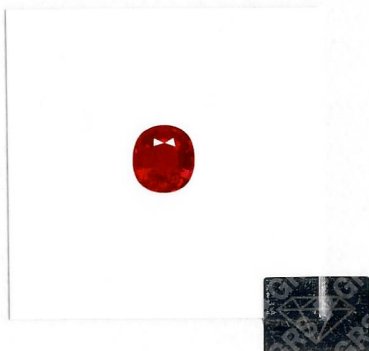


GEMSTONE REPORT

EDELSTEINBERICHT
RAPPORT DE PIERRE PRÉCIEUSE

No. GRS2023-030693
Date 21st March 2023
Object One faceted gemstone
Identification Natural Ruby



Weight 3.22 ct
Dimensions 8.79 x 8.11 x 4.84 (mm)
Cut brilliant/step (4)
Shape cushion
Color vivid red *
Comment H
* Special comment see appendix

See reverse for important information, terms and limitations

Origin

Gemmological testing revealed characteristics corresponding to those of a natural ruby from:

Mozambique

GRS


Dr. A. Peretti, FGG FGA
EuroGeol (European Geologist)

www.gemresearch.ch



2023-030693

Verification



Appendix to report No. GRS2023-030693

This vivid red Mozambique ruby is reminiscent in color saturation of "GRS-type pigeon blood ruby" (without strong fluorescence).





GIA®

2355

GIA REPORT
14056588

Verify this report at GIA.edu

GIA NATURAL DIAMOND GRADING REPORT

March 01, 2019
GIA Report Number 14056588
Shape and Cutting Style Marquise Brilliant
Measurements 10.72 x 5.49 x 3.55 mm

GRADING RESULTS

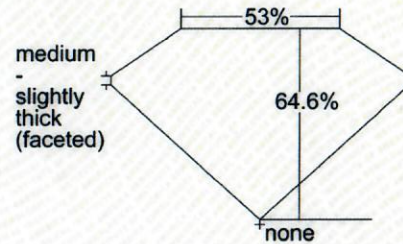
Carat Weight 1.18 carat
Color Grade G
Clarity Grade VS2

ADDITIONAL GRADING INFORMATION

Polish Very Good
Symmetry Good
Fluorescence None
Inscription(s): GIA 14056588

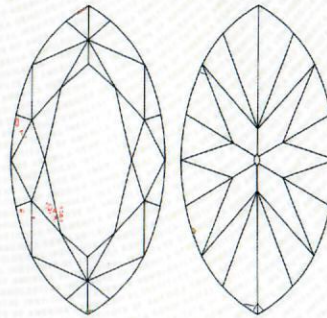
Comments: Additional clouds are not shown. Pinpoints are not shown.

PROPORTIONS



Profile not to actual proportions

CLARITY CHARACTERISTICS



KEY TO SYMBOLS*

- ☉ Cloud
- Crystal
- ↘ Feather
- ⊖ Cavity
- ↗ Needle
- ↖ Indented Natural
- ▲ Natural
- △ Extra Facet

* Red symbols denote internal characteristics (inclusions). Green or black symbols denote external characteristics (blemishes). Diagram is an approximate representation of the diamond, and symbols shown indicate type, position, and approximate size of clarity characteristics. All clarity characteristics may not be shown. Details of finish are not shown.

GRADING SCALES

GIA COLOR SCALE		GIA CLARITY SCALE	
COLOREST	D	VERY VERY SLIGHTLY INCLUDED	FLAWLESS
	E		INTERNALLY FLAWLESS
	F		VVS ₁
NEAR COLOREST	G	VERY SLIGHTLY INCLUDED	VVS ₂
	H		VS ₁
	I		VS ₂
FAINT	J	SLIGHTLY INCLUDED	SI ₁
	K		SI ₂
	L		I ₁
VERY LIGHT	M	INCLUDED	I ₂
	N		I ₃
	O		
LIGHT	P		
	Q		
	R		
	S		
	T		
	U		
	V		
	W		
	X		
	Y		
	Z		



reportcheck.gia.edu



The results documented in this report refer only to the diamond described, and were obtained using the techniques and equipment available to GIA at the time of examination. This report is not a guarantee or valuation. For additional information and important limitations and disclaimers, please see GIA.edu/terms or call +1 800 421 7250 or +1 760 603 4500. ©2019 Gemological Institute of America, Inc.

THE SECURITY FEATURES IN THIS DOCUMENT, INCLUDING THE HOLOGRAM, SECURITY SCREEN AND MICROPRINT LINES, IN ADDITION TO THOSE NOT LISTED, EXCEED DOCUMENT SECURITY INDUSTRY GUIDELINES.

1006539562