



**GIA**  
GEMOLOGICAL INSTITUTE OF AMERICA®

Facsimile

5355 Armada Drive | Carlsbad, CA 92008-4602  
T: 760-603-4500 | F: 760-603-1814

**GIA Laboratories**

Bangkok      Carlsbad      Gaborone  
Johannesburg      Mumbai      New York

[www.gia.edu](http://www.gia.edu)

**IDENTIFICATION REPORT**

September 13, 2011

Measurements ..... **56.75 x 31.50 x 6.50 mm**  
Shape..... **Pierced Double Sided Carving**  
Transparency..... **Translucent**  
Color..... **Variegated Dark Green to White**  
Item Description..... **Set as a pendant on a blue cord with six (6) yellow metal enameled links and numerous white round beads.**

**CONCLUSION**

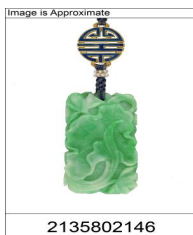
Species..... **JADEITE JADE**

**TREATMENT**

**NATURAL COLOR. No indications of impregnation.**

Comments:

None



  
**510113057806**

This is a digital representation of the original GIA Report. To verify the information herein, please refer to [reportcheck.gia.edu](http://reportcheck.gia.edu). This Report is not a guarantee, valuation or appraisal and contains only the characteristics of the diamond described herein after it has been graded, tested, examined and analyzed by the laboratory providing this Report ("GIA") and/or has been inscribed using the techniques and equipment used by GIA at the time of the examination and/or inscription. Inscriptions reported in this document are not a guarantee, validation, or warranty of a diamond's quality, country of origin or source; or that the diamond will be identifiable by the inscription in the future (since inscriptions can be removed). GIA makes no representation concerning any trademark, word, or symbol which is inscribed by GIA or which is identified on this Report. The recipient of this Report may wish to consult a credentialed jeweler or gemologist about the information contained herein.

For terms, conditions, and limitations, see [www.gia.edu/terms](http://www.gia.edu/terms) or call 800-421-7250 or 760-603-4500.

 The security features in this document exceed document security industry guidelines.  
©2010 GEMOLOGICAL INSTITUTE OF AMERICA, INC.