



Nan Yang Gemological Institute
南洋宝石学院

Gemstone Report
宝石鉴定证书

Report No. 32883291

Date: May 24, 2024



Conclusion 鉴定结论

Natural Pink Sapphire (Corundum)

Weight

重量

Measurements

尺寸

Shape and Cut

形状和切工

Color

颜色

Transparency

透明度

Approx. 7.2 cts. (Estimated). (Mounted. Total weight of brooch is 10.86 grams, including setting)

Approx. 11.55 x 10.60 x 7.16 mm

Oval, brilliant / step cut

Pink

Transparent

© Copyright by Nan Yang Gemological Institute

Diagnostic Properties

Refractive Index 1.760 - 1.768 (Birefringence = 0.008)

折 射 率

Specific Gravity

相对密度

Absorption

Spectrum

吸收光谱

Magnification

放大检查

Other test

其它测试

Comments

备注

(Indeterminable due to the mounting)



Needle-like inclusion and crystal with halo

Pleochroism and fluorescence

Indications of heating. Natural sapphires are commonly heated.

Precious metal tested: 18K gold. (using X-ray fluorescence method)

Weight estimated by formula to be approximate. Tested insofar as mounting permits.

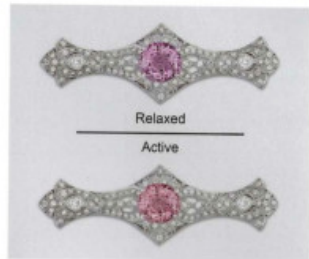
C. G. Zeng B.Sc. (Hons), M.Sc. (Geology)
Consultant Gemologist, Jewellery Appraiser (USA)
FGA (England), C.D.G. (Belgium), D.G. (GIA)

14 Scotts Road, #03-80, Far East Plaza
Singapore 228213
Tel: (65) 6333 6238
www.ngi.com.sg

Member of
Gemological Association of Great Britain
Singapore Jewellers Association

Important information and limitations on reverse.

Imaging



Images do not accurately portray size or color.

Accu-Vu™ Imaging:



Comments:
This diagram is an example and does not represent the actual facet arrangement of the item described

Identification

Document No: 1146651 Validation Date: 25 March 2025

Identification

Mineral Type: Natural Corundum Transparency: Transparent

Variety: Fancy Sapphire Color Description: Pink to Orangy Pink

Carat Weight: Not Determined Shape: Oval

Measurements: Approx. 11.52 x 10.53 x 7.10 mm Cutting Style: Modified Mixed Cut

Comments: Set in a white metal pin with numerous round diamonds (identified at random). This gemstone exhibits color shift. As a result the color appearance may vary. Refer to General Report Comments below.

Origin

Origin
Provenance: Ceylon (Sri Lanka)

Comments: Based on available gemological information, it is the opinion of the Laboratory that the origin of this material would be classified as Ceylon (Sri Lanka).



Enhancement

Enhancement

Standard: Low temperature heating Additional: Clarity enhancement: None

Comments: Gemological evidence of relatively low temperature heating. Fancy sapphires are commonly heated to modify their color and appearance.

1	2	3	4	5	6	7	8	9	10	None	Insignificant	Minor	Moderate	Strong	Prominent
Excellent	Very Good	Good	Fair	Poor	Extremely Rare	Very Rare	Rare	Uncommon	Common	Very Common					

Enhancement Stability Index™

Degree of Clarity Enhancement & Relative Rarity

General Report Comments:

This gemstone possesses an intriguing natural phenomenon where a color-center can become active or relaxed (inactive) based on prolonged exposure to various sources of light and/or heat.

American Gemological Laboratories
580 Fifth Avenue • New York, NY 10036 • 212.704.0727 • www.agilgemlab.com

(Please see the back of this document for important disclaimer information) © 2025 AGL

M. Chaipaksa
Monvadee Chaipaksa, Senior Gemologist

Christopher P. Smith
Christopher P. Smith, President



America
America's first

AGL is an
testing fir

first lab
Country-of-4
principals have
detection of
and-clas

Our stat
of gemstone
reflect
techniq

methodology pr
and reliab
the hi
th