



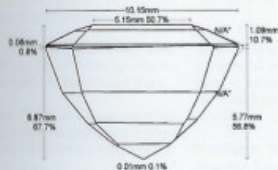
Daylight



Incandescent Light

Images do not accurately portray size or color.

Locu-Vu™ Imaging:



omments:

General Report Comments:

Document No: CS 1079336

Validation Date: 26 October 2016

Identification

Mineral Type:	Natural Chrysoberyl
Variety:	Alexandrite

Color Description: Bluish Green
and Reddish Purple

Carat Weight: 6.90 cts
Measurements: 10.41 x 10.15 x 6.87 mm

Shape: Square
Cutting Style: Emerald Cut

Comments: Degree of Color Change: Prominent (90% - 100%)
Quality of Color Change: Excellent

Origin

Provenance: Classic™ Brazil

Comments: Based on available gemological information, it is the opinion of the Laboratory that the origin of this material would be classified as Classic™ Brazil.



Enhancement

Standard: None

Degree: N/A

Type: N/A

Stability Index: N/A

Additional: Clarity enhancement: None

Degree: N/A

Type: N/A

Stability Index: N/A

Comments: No gemological evidence of enhancements/treatments present.
N/A represents Not Applicable

1	2	3	4	5	6	7	8	9	10
Excellent		Very Good		Good		Fair		Poor	

Enhancement Stability Index™

None	Insignificant	Minor	Moderate	Strong	Prominent
Extremely Rare	Very Rare	Rare	Uncommon	Common	Very Common

Degree of Clarity Enhancement & Relative Rarity™





magnification 1.5x

Gemstone Report No. 89786

Weight:	6.906 ct
Shape & cut:	octagonal, step cut
Measurements:	10.42 x 10.15 x 6.87 mm
Colour:	daylight: bluish green incandescent light: purple
Identification:	ALEXANDRITE (variety of natural chrysoberyl)
Comments:	The analysed properties confirm the authenticity of this transparent alexandrite. No indications of any treatment. With a distinct colour-change. Origin: Hematita, Brazil

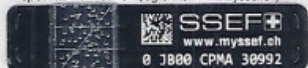
Important Note: The conclusions on this Gemstone Report reflect our findings at the time it is issued. A gemstone could be modified and/or enhanced at any time. Therefore, the SSEF can at any time reassess if a stone is in accordance with the Gemstone Report. Only the report with the valid original signatures, embossed stamp and Proof Tag™ label affixed on to the surface of the laminated report is a valid document. PDF scans and copies of a Gemstone Report are not legally binding. See terms and conditions on reverse side and www.ssef.ch/terms-conditions. © This Gemstone Report is copyright of SSEF.

SWISS GEMMOLOGICAL INSTITUTE – SSEF

Basel, 23 January 2017 dh

J.-P. Chalain, DUG

Report authentication (log on to www.myssef.ch)



Dr. M. S. Krzemnicki, FGA