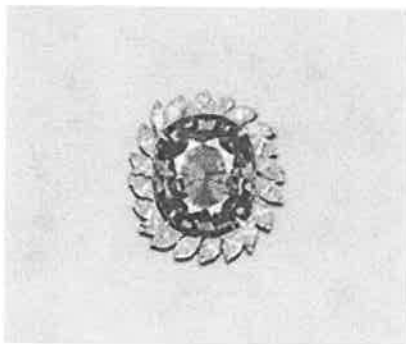


The Prestige Gemstone Report™

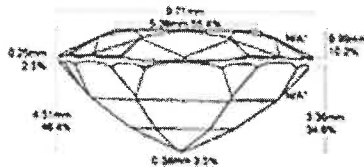
American Gemological Laboratories™



Imaging

Images do not accurately portray size or color.

Accu-Vu™ Imaging:



Comments:
This diagram is an example and does not represent the actual facet arrangement of the gem described.

Document No: CS 1078646 **Validation Date:** 27 October 2016

Identification
Mineral Type: Natural Tourmaline
Variety: Paraíba-Type **Color Description:** Blue

Carat Weight: Stated by Client 23.24 cts **Shape:** Oval
Measurements: Approx. 20.24 x 16.74 x 9.89 mm **Cutting Style:** Mixed Cut

Comments: Set in a white metal ring with several marquise and round diamonds (identified at random). Paraíba-Type is a term/color variety applied by the AGL to the copper-bearing variety of elbaite tourmaline, which was first discovered in the Paraíba state of Brazil, but may have originated from a different source.

Identification

American Gemological Laboratories™
 America's first and most highly respected origin lab

Founded in 1977.

AGL is an internationally recognized gemstone testing facility, specializing in comprehensive colored stone analyses.

AGL has the distinction of being the first laboratory in the United States to issue Country-of-Origin reports. Our company and its principals have a long tradition of research into the detection of and reporting on gem identification and-classification, gemstone treatments and provenance determinations.

Our staff is composed of experts in the field of gemstone testing and reporting. Our findings reflect the latest knowledge and analytical techniques to ensure the highest standards are applied on every stone we test.

AGL's testing and reporting methodology provide you with unsurpassed quality and reliability. We are committed to providing the highest level of service and reporting that our clients and the industry have come to expect from the AGL.

About Us

Origin
Provenance: Mozambique

Comments: Based on available gemological information, it is the opinion of the Laboratory that the origin of this material would be classified as Mozambique.



Origin

Enhancement
Standard: No gemological evidence of heat. **Additional:** Clarity enhancement: None
Degree: N/A **Degree:** N/A
Type: N/A **Type:** N/A
Stability Index: N/A **Stability Index:** N/A

Comments: Non-heated paraiba-type tourmaline is scarce. The color of paraiba-type tourmaline is commonly the result of a relatively low temperature heating process. N/A represents Not Applicable.

Enhancement

| | | | | | | | | | |
|-----------|-----------|------|------|------|---|---|---|---|----|
| 1 | 2 | 3 | 4 | 5 | 6 | 7 | 8 | 9 | 10 |
| Excellent | Very Good | Good | Fair | Poor | | | | | |

Enhancement Stability Index™

| | | | | | |
|----------------|---------------|-------|----------|--------|-------------|
| None | Insignificant | Minor | Moderate | Strong | Prominent |
| Extremely Rare | Very Rare | Rare | Uncommon | Common | Very Common |

Degree of Clarity Enhancement & Relative Rarity™

Christopher P. Smith, President



General Report Comments:

American Gemological Laboratories
 580 Fifth Avenue • New York, NY 10036 • 212.704.0727 • Fax: 212.764.7614 • www.aglgemlab.com

Please see the back of this document for important disclaimer information. ©2015 AGL