



GIA REPORT
16945086

Verify this report at GIA.edu

FACSIMILE

This is a digital representation of the original GIA Report. This representation might not be accepted in lieu of the original GIA Report in certain circumstances. The original GIA Report includes certain security features which are not reproducible on this facsimile.

GIA NATURAL DIAMOND GRADING REPORT

December 01, 2020
GIA Report Number 16945086
Shape and Cutting Style Cushion Brilliant
Measurements 21.34 x 18.00 x 7.20 mm

GRADING RESULTS

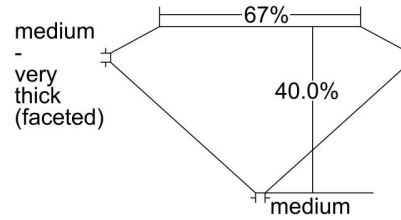
Carat Weight 21.35 carat
Color Grade D
Clarity Grade SI1

ADDITIONAL GRADING INFORMATION

Polish Very Good
Symmetry Good
Fluorescence None

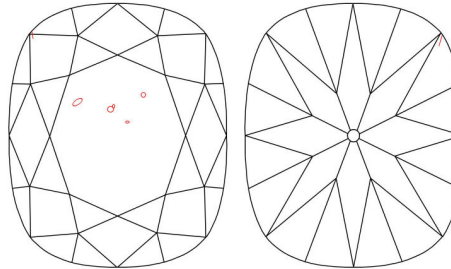
Comments: A pinpoint is not shown.

PROPORTIONS



Profile not to actual proportions

CLARITY CHARACTERISTICS



KEY TO SYMBOLS*

- Crystal
- Feather

GRADING SCALES

GIA COLOR SCALE		GIA CLARITY SCALE	
COLORLESS	D	NEAR COLORLESS	FLAWLESS
	E		FLAWLESS
	F		FLAWLESS
NEAR COLORLESS	G	VERY VERY SLIGHTLY INCLUDED	INTERNALLY FLAWLESS
	H		VVS ₁
	I		VVS ₂
FANT	J	VERY SLIGHTLY INCLUDED	VVS ₂
	K		VS ₁
	L		VS ₁
VERY LIGHT	M	SLIGHTLY INCLUDED	VS ₂
	N		VS ₂
	O		SI ₁
LIGHT	P	INCLUDED	SI ₁
	Q		SI ₂
	R		SI ₂
	S		I ₁
	T		I ₁
	U		I ₂
	V		I ₂
	W		I ₃
	X		I ₃
	Y		I ₃
	Z		I ₃



reportcheck.gia.edu

The results documented in this report refer only to the diamond described, and were obtained using the techniques and equipment available to GIA at the time of examination. This report is not a guarantee or valuation. For additional information and important limitations and disclaimers, please see GIA.edu/terms or call +1 800 421 7250 or +1 760 603 4500. ©2017 Gemological Institute of America, Inc.



* Red symbols denote internal characteristics (inclusions). Green or black symbols denote external characteristics (blemishes). Diagram is an approximate representation of the diamond, and symbols shown indicate type, position, and approximate size of clarity characteristics. All clarity characteristics may not be shown. Details of finish are not shown.



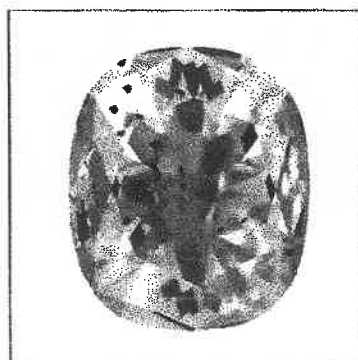
GIA®

5355 Armada Drive
Carlsbad, CA 92008-4602
T +1 760 603 4500
F +1 760 603 1814
E labservice@gia.edu
GIA.edu

December 01, 2020

DIAMOND TYPE CLASSIFICATION FOR GIA DIAMOND GRADING REPORT #16945086

Scientists classify diamonds into two main "types" - type I and type II - based on the presence or absence of nitrogen which can replace carbon atoms in a diamond's atomic structure. These two diamond types can be distinguished on the basis of differences in their chemical and physical properties. Type II diamonds contain little if any nitrogen and they are subdivided into two groups (IIa and IIb) both of which are quite rare (less than 2% of all gem diamonds).



According to the records of the GIA Laboratory, the 21.35 carat Cushion Brilliant diamond described in GIA Diamond Grading Report #16945086 has been determined to be a **type IIa** diamond. Type IIa diamonds are the most chemically pure type of diamond and often have exceptional optical transparency. Type IIa diamonds were first identified as originating from India (particularly from the Golconda region) but have since been recovered in all major diamond-producing regions of the world.

Among famous gem diamonds, the 530.20 carat Cullinan I and the 105.60 carat Koh-i-noor are examples of type IIa.

PLEASE REFER TO IMPORTANT LIMITATIONS AND DISCLAIMERS ON THE BACK OF THIS DOCUMENT